


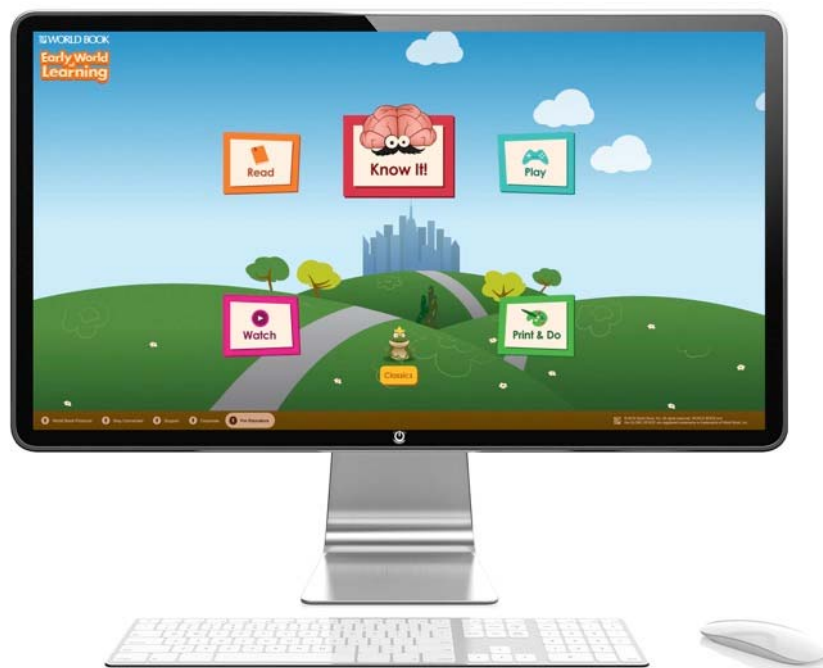
Tips on how to use the new EWOL Interface – Desktop/Laptop version

Contents:

1. Accessing EWOL on desktop/Laptop – pg 1
2. Using the Key features – homepage – pg 2
3. How to read a book – pg 3
4. How to navigate the Know It! Section – pg 5
5. Using the Key features – Play section – pg 6
6. Using the Key features – Watch section – pg 8
7. Using the Key features – Print & Do section – pg 9
8. Using the Key features – Story Corner, Nursery Rhymes, and Songs section – pg 10

1. Accessing EWOL on desktop/laptop

- To access EWOL on your desktop/laptop simply go to your web browser on your desktop/laptop and go to www.worldbookonline.com
- Login using your username and password
- Once logged in, click on the Early World of Learning icon  on the Super homepage
- You will then be automatically directed to the Early World of Learning interface



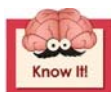
2. Using the Key features - homepage



Menu items:



Click this icon to be taken to the Literacy Centre
This section includes: Trek's Travels and Welcome to Reading



Click this icon to be taken to the visual online encyclopedia
This section is divided into 11 categories. It offers additional material and media that relates to each topic.



Click this icon to be taken to the Games Centre
This section includes the following games:
Put the Story in Order, Concentration, Multiple Choice, Sorting.



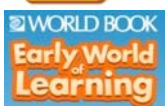
Click this icon to be taken to the video section
This section includes a variety of short film clips on a number of topics which include: animals, earth, machines, plants, getting around, big ideas, people, places, sports and hobbies



Click this icon to be taken to the Printable activity section
This section includes a variety of printable activities related to a number of subject areas such as colour, letters, location, matching, numbers, sets, shapes, sizes and time. These can all be printed.



Click this icon to be taken to the Story book section
This section includes Story Corner, Nursery Rhymes and Songs
In this section, you will be taken to a different interface



Click this icon at any time to be taken back to the EWOL homepage



This icon forms part of the menu located at the bottom of the screen.
Click this icon to access other World Book Online products your subscription includes.



This icon forms part of the menu located at the bottom of the screen.
Click this icon to access the Educator Centre which is a comprehensive resource centre for teachers.

3. How to read a book:

Click the Read icon. This icon is now highlighted to let you know which section you are in.

Example: Trek's Travels



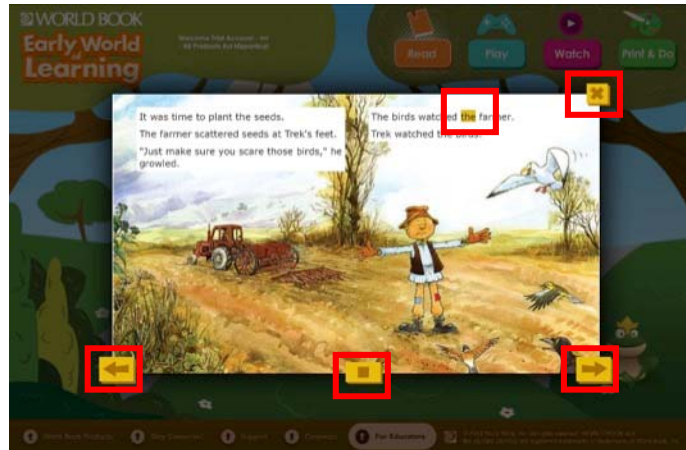
Click on either icon displayed in the centre of the screen to enter that section.

Once clicked, a new screen will appear.

Trek's Travels:



1. To select a story to view, use the scroll bar located to the right of the screen.
2. Once you have selected a story to view, click the title. You know it has been selected when it is highlighted and the cover appears to the left.
3. To open the title, click on 'Open' or the thumbnail cover image on the left hand side. The story book will then open.
4. A number of related materials will appear at the bottom, these include play activities, film clips, readable facts, and images. To view any of these, simply click the thumbnail image and it will automatically appear.



Once in the title the book will begin reading aloud and turn through the pages automatically. Each word will be highlighted as it is read aloud.

1. To turn this function off, click the middle “Stop/Pause” button at the bottom of the page.
2. To browse through the pages, click the appropriate arrow located on the left and right hand sides of the page.
3. To close the book, click the ‘x’ in the top right corner.

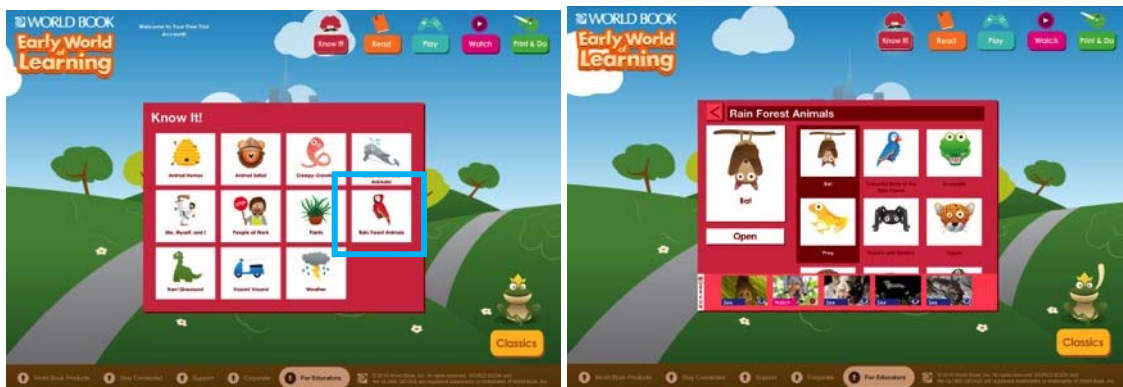
To return to the ‘Read’ homepage, click the ‘Read’ icon to explore Welcome to Reading.

Welcome to Reading



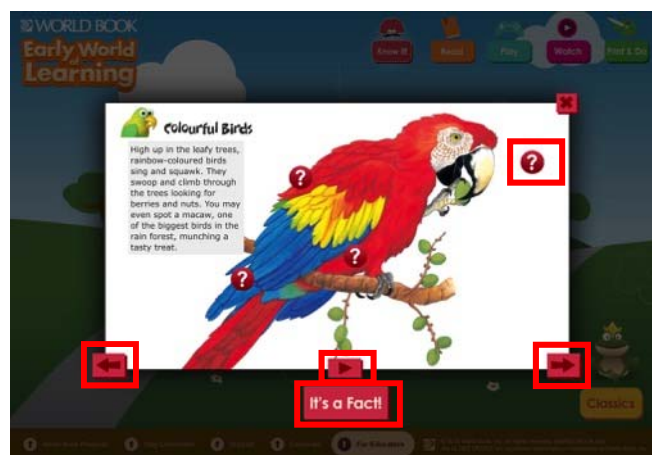
To view a book by reading level, simply click the Level A, B, C or D located on the right-hand side. To view all the books in a level, use the scroll bar located on the right side of the screen.

5. How to navigate the Know It! section



Browse by subject: To browse the subjects, simply click on the subject, e.g. Rain Forest Animals. See image above for example.

View a subject item: To view an item within that subject area you use the same actions as you would when selecting a book to read. Scroll by using the scroll bar and then click on the title you would like to view so it is highlighted then click on 'Open' or the image in the box to the left.



Click to view information on the topic.



Click to activate the read aloud function.

It's a Fact!

Click to view an interesting fact.



Scroll through other pages by using the arrows located on the left and right of page.



Click the 'x' to close. This will return you to the subject homepage.



Click the arrow to return to *Know It!* homepage. To exit *Know It!* and explore elsewhere, click the icon related to where you'd like to explore next.

6. Using the Key features – Play section



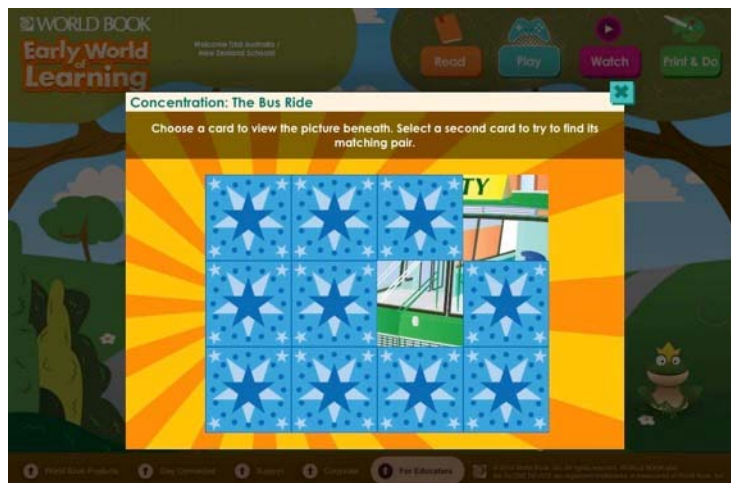
Put the Story in Order:



Key motion required in playing this game is **drag**.

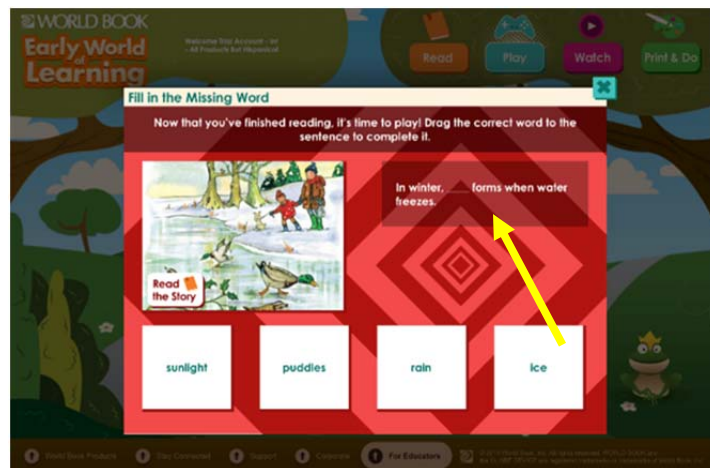
Drag the section of the story to the appropriate place by clicking on an image then dragging the image to the correct place using your mouse.

Concentration:



Click on a title to view the picture beneath. Select a second card to try to find its matching pair. Only two cards are displayed at one time. The aim is to locate the corresponding card.

Multiple Choice:



Key motion required in playing this game is **drag**.

Select the word you think correctly completes the sentence by dragging the right word up to the sentence using your mouse.

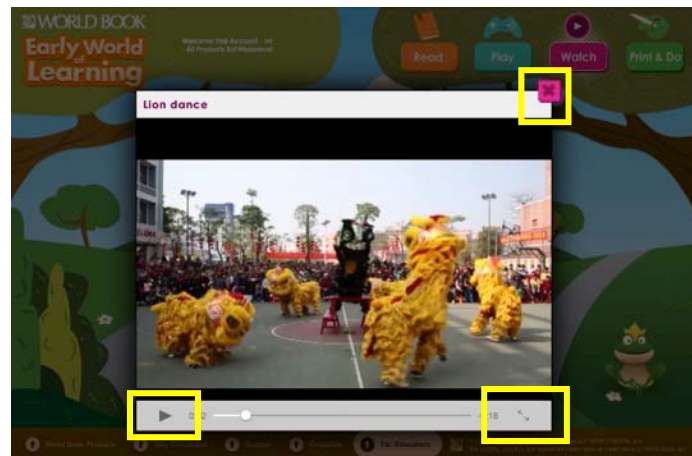
Sorting:



Key motion required in playing this game is **drag**.

Drag the image to the appropriate bucket located below by clicking on an image then dragging the image to the appropriate bucket below using your mouse.

7. Using the Key features – Watch section



The Pause, Stop and Play function is located in the bottom left corner of the video clip screen. You can view the video clip in full screen by clicking the arrows in right corner.

To close the video box, click the 'X'.

To browse more clips, click the Categories icon once the video clip box is closed.

To move out of the Play section, click the icon related to where you would like to explore next.

8. Using the Key features – Print & Do section



Download/Print:



Click to download activity sheet.



Click to print activity sheet. Note: a printer has to be already setup to your iPad.

A new window will open in your browser containing the activity or it will automatically download to your default download source.

9. Using the Key features – Story Corner, Nursery Rhymes, and Songs section

To access this section, click the frog.



There are 3 different sections included in here:

1. Story Corner
2. Nursery Rhymes
3. Songs

To go back to the other interface at any point, click either the Home icon, the Prince icon or the title Early World of Learning.

Click the appropriate icon to view its contents.